

# Perfect Lodging

Lodges of the American West inspired a family's dream home.



BY KAREN DOSS BOWMAN ✦ PHOTOGRAPHY BY GARTH DOWLING

ONE FAMILY'S ANNUAL vacation destination to picturesque Jackson Hole, Wyoming, became their home nearly two years ago. The outdoor enthusiasts, who enjoy activities such as hunting, fishing, rafting, skiing, and kayaking, designed and built Bighorn Lodge, a 10,000-square-foot home inspired by their many visits to the great lodges of the national parks in the Western states—particularly Old Faithful Lodge in Yellowstone National Park.



THIS ANTLER CHANDELIER IN THE FAMILY ROOM, HAND-CRAFTED OUT OF HUNDREDS OF MULE DEER SHEDS BY AN ARTISAN FROM IDAHO, IS EIGHT FEET IN DIAMETER AND NINE FEET TALL. THE HOMEOWNER BELIEVES IT TO BE THE LARGEST ANTLER CHANDELIER IN NORTH AMERICA. FROM THIS VANTAGE POINT, GUESTS AND FAMILY MEMBERS CAN TAKE IN THE VIEWS OF THE INTRICATE ROOF SYSTEM, WHICH FEATURES A VARIETY OF TRUSS CONFIGURATIONS AND HAND-HAMMERED IRON WORK.

OPPOSITE: THE ENTRY FOYER SHOWCASES ONE OF THE HOME'S FIVE MASSIVE FIREPLACES, BUILT OUT OF MONTANA MOSS ROCKS. THE NATURA CHANDELIER IS MADE OF HAND-HAMMERED IRON WORK WITH STAINED GLASS INSETS.



"We love the outdoors and visiting the national parks," the homeowner says. "Living in a log home reminds us of the beautiful lodges of the national parks. When you're inside the house, even though it's elegant, the rustic feel reminds you of the outdoors."

Bighorn Lodge is located on six acres and surrounded by the Grand Teton National Park on three sides—an area famous for its diverse ecosystem and the largest elk and bison herds in North America. The Snake River flows within walking distance of the home, offering world-class cutthroat trout fishing. The area also is home to the Jackson Hole Mountain Resort, rated by *Skiing* magazine as the number one ski resort in the United States.

The sprawling home, which incorporates a variety of architectural features such as dramatic porches and overhangs, porte-cochere, and exterior columns on piers, is built out of Western red cedar logs—all full rounds averaging 18 inches in diameter. This species is highly resistant to insects and

**ABOVE:** THE DINING ROOM, WHICH IS OPEN TO THE FAMILY ROOM AND KITCHEN, ALLOWS THE HOMEOWNERS TO ENTERTAIN FAMILY AND FRIENDS WHILE SHARING THEIR STUNNING VIEW OF THE TETON MOUNTAINS. THE FLOORING MATERIAL IS A MOSAIC OF THREE-RIVER STONE BROUGHT IN FROM IDAHO.

**LEFT:** STYLE WASN'T COMPROMISED IN THIS KITCHEN, WHICH FEATURES NATURAL-FINISH CHERRY CABINETS AND EXOTIC GRANITE COUNTERTOPS. THE ISLAND, ALSO MADE OF CHERRY, IS PAINTED ANTIQUE BLACK FOR A VINTAGE APPEARANCE.

decay and has excellent thermal properties, explains Robert Lockerby, owner and president of log producer Summit Handcrafted Log Homes Inc., of Boise, Idaho.

"Western red cedar doesn't warp or twist, and it doesn't check or crack," Lockerby says. "It's the most stable, the most beautiful, and most insect and decay resistant."

Summit Handcrafted also used a special high-pressure water process to remove the bark and cambium of each log used in the construction of the home. This surface finish, known as "latewood," allows the natural character and beauty of the wood to show. Wood features such as knots, bumps, ripples, and burls are on display.

"All of those beautiful features of the tree get lost if you drawknife it," Lockerby says. "But by using the latewood process, we preserve all of that natural beauty."

The custom handcrafted log home was built in the *piece en piece* style, which uses vertical posts for the corners of the house instead of the traditional saddle-notched corner system. Because Bighorn Lodge's elaborate design includes many corners, the *piece en piece* eliminated potential settling issues.

"By going with *piece en piece* style, it was much easier to handle the complexity of the design and effectively deal with settling issues," Lockerby says.



THE SITTING AREA IN THE MASTER BEDROOM OFFERS A PRIVATE, QUIET PLACE FOR THE HOMEOWNERS TO RELAX BY THE FIREPLACE, ONE OF FIVE IN THE HOME BUILT OUT OF MONTANA MOSS ROCKS. THE IRON WORK, CRAFTED BY A LOCAL ARTISAN, FEATURES AN INTRICATE WESTERN DESIGN.



#### DESIGN TIPS

ENHANCE THE HOME'S RUSTIC FLAVOR BY USING HAND-CRAFTED WOOD ELEMENTS AND HAND-HAMMERED IRON WORK.

BREAKING UP THE LOG WALLS WITH SOME DRYWALL BRINGS IN AN ACCENT COLOR TO COMPLEMENT THE DECOR.

The detailed roofing system also was complex, explains Lockerby, because of its many hand-crafted and hand-carved components, along with a variety of truss configurations, which include cross, scissor, and hammer trusses. The roof is held together by mortise and tenon joinery and features decorative hand-hammered iron work to enhance the rustic feel.

Though the house is just one story, the extra high ceilings (24 feet in the great room and 16 feet in the bedrooms) and 24 dormers give Bighorn Lodge the appearance of having two stories when viewed from outside. The homeowners designed it this way not only to enhance the structure's Western character, but also to allow in natural light to brighten the indoor spaces.

"We wanted to give balance to the house with the upper windows and to provide an atrium effect, bringing in natural light from the upper story windows to the open rooms below," says the homeowner. "That gives the feeling of space and brings in plenty of light, since log homes tend to be darker."

**ABOVE:** THE MASTER BEDROOM OFFERS BREATHTAKING GRAND TETON VIEWS. THE DRYWALL PROVIDES A WARM CONTRAST TO THE MASSIVE LOGS AND ALLOWS THE HOMEOWNERS TO INTRODUCE COLOR FOR A COZIER FEEL. ALL OF THE WINDOWS IN THE HOUSE ARE DOUBLE-PANED, LOW-EMISSION AND ARGON-FILLED WITH TINTED GLASS, HELPING TO MAINTAIN ENERGY EFFICIENCY EVEN DURING THE BITTER COLD WINTERS, WHICH TYPICALLY INCLUDE EXTENDED PERIODS OF TEMPERATURES AT 30 DEGREES BELOW ZERO.

**TOP LEFT:** THE MASTER BATHROOM HAS A PERFECTLY SYMMETRICAL DESIGN, WITH TWO SHOWERS AND TWO VANITIES FLANKING A LARGE PICTURE WINDOW TO SHOWCASE EXQUISITE VIEWS OF THE NATURAL OUTDOOR SETTINGS. THE BRAZILIAN SLATE FLOORING IS LOVELY AND EASY TO MAINTAIN.

**BOTTOM LEFT:** THE GUEST BEDROOM, WITH VIEWS OF THE GROS VENTRE MOUNTAIN RANGE, FEATURES A CHANDELIER MADE FROM SHED ELK ANTLERS. THE BRIGHT REDS AND YELLOW TONES CREATE A COMFORTING WARMTH THAT CONTRASTS WITH THE MASSIVE LOG WALLS.



The family enjoys spending time together and entertaining guests in the great room, which is open to the dining room and kitchen. The 40-by-65-foot great room, which offers stunning Grand Teton views, showcases the elaborate roof truss system and the beautiful character of the logs.

The kitchen is equipped for entertaining family and friends with high-end Wolf appliances, including two professional-grade ovens, stovetop, and warming tray, that are hidden behind cabinet panels. The natural-finish cherry cabinets complement the exotic granite countertops. The island, also made of cherry, is painted antique black for a vintage appearance.

The homeowners also paid special attention to creating outdoor spaces that are ideal for entertaining or just for relaxing. Bighorn Lodge has six outdoor covered patios, creating the perfect setting where this family can take in the beautiful views of the Teton Mountains to the west, the Yellowstone Mountain range to the north, the Gros Ventre range to the east, and the Hoback Mountains to the south.

"The setting and the lifestyle in Jackson Hole can only be described as surreal," the homeowner says. "Our family enjoys every year here as if it was our first." ❄️

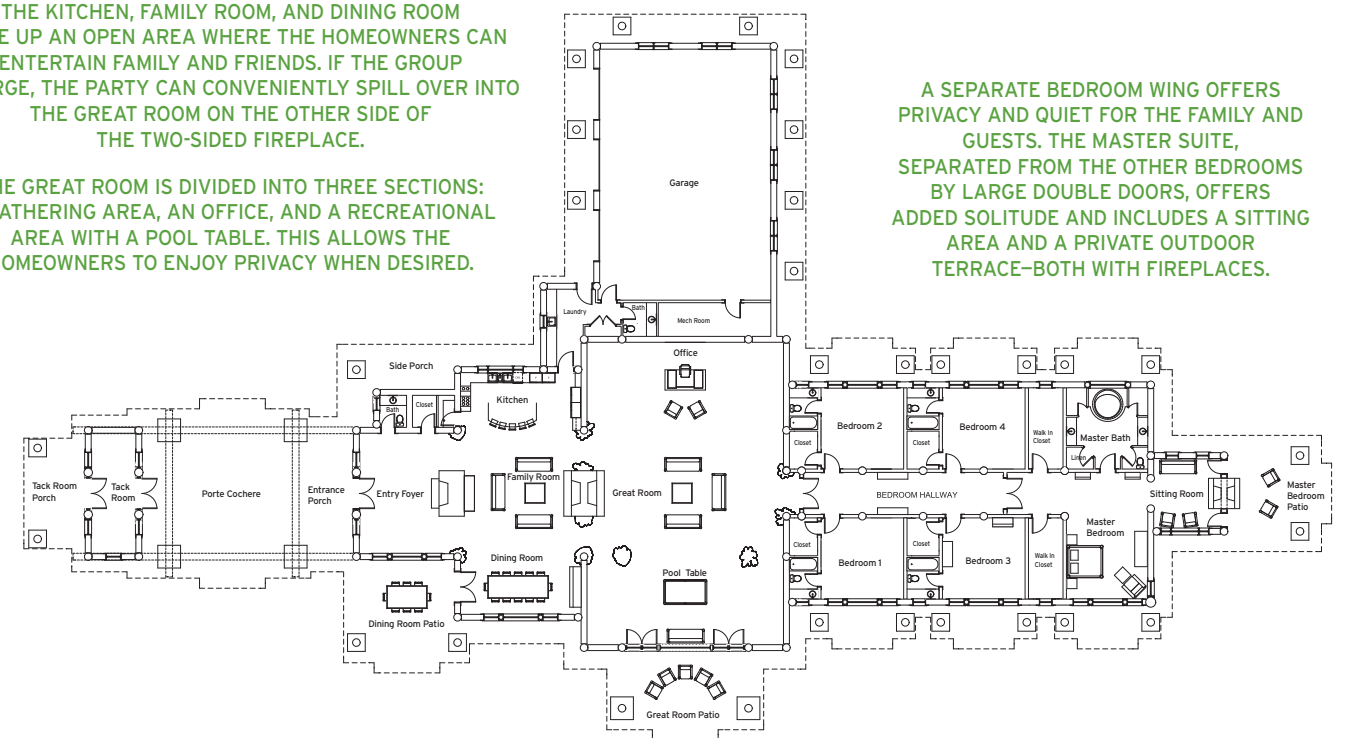
**LEFT:** THE HOMEOWNERS CAN ENJOY QUIET EVENINGS TOGETHER ON THE OUTDOOR TERRACE LOCATED OUTSIDE THE MASTER BEDROOM. LIKE THE OTHER COVERED PORCHES THAT WRAP AROUND THE ENTIRE HOUSE, THIS TERRACE FEATURES COLUMNS ON PIERS MADE FROM MONTANA MOSS ROCK.

**BELOW:** BIGHORN LODGE IS NEARLY 270 FEET LONG AND FEATURES NUMEROUS DORMERS, COLUMNS ON PIERS, A VARIETY OF TRUSS STYLES, AND MANY WINDOWS TO PROVIDE STUNNING VIEWS OF THE SURROUNDING TETON MOUNTAINS.

THE KITCHEN, FAMILY ROOM, AND DINING ROOM MAKE UP AN OPEN AREA WHERE THE HOMEOWNERS CAN ENTERTAIN FAMILY AND FRIENDS. IF THE GROUP IS LARGE, THE PARTY CAN CONVENIENTLY SPILL OVER INTO THE GREAT ROOM ON THE OTHER SIDE OF THE TWO-SIDED FIREPLACE.

THE GREAT ROOM IS DIVIDED INTO THREE SECTIONS: A GATHERING AREA, AN OFFICE, AND A RECREATIONAL AREA WITH A POOL TABLE. THIS ALLOWS THE HOMEOWNERS TO ENJOY PRIVACY WHEN DESIRED.

A SEPARATE BEDROOM WING OFFERS PRIVACY AND QUIET FOR THE FAMILY AND GUESTS. THE MASTER SUITE, SEPARATED FROM THE OTHER BEDROOMS BY LARGE DOUBLE DOORS, OFFERS ADDED SOLITUDE AND INCLUDES A SITTING AREA AND A PRIVATE OUTDOOR TERRACE—BOTH WITH FIREPLACES.



## Mountain Life

Combining their love of outdoor activities and the great lodges of the western United States, this family built a sprawling log home that gives everyone all the space they need. The home spreads out in a straight line that allows stunning views of the mountains from every room. The home is surrounded on all sides by covered decking, providing protection to the structure during the extremely cold and snowy winters. The shaded areas are also ideal relaxing spots for warm summer days.



Log Producer: Summit Handcrafted Log Homes, Boise, Idaho  
 Log Home Designer: Cyril Courtois, RCM CAD Design Drafting, Ltd., Abbotsford, British Columbia  
 Builder: Legendary Log Homes of Jackson Hole, Jackson, Wyoming

One-story home | Square Footage: 10,000 | Bedrooms: 5 Baths: 5 full, 2 half